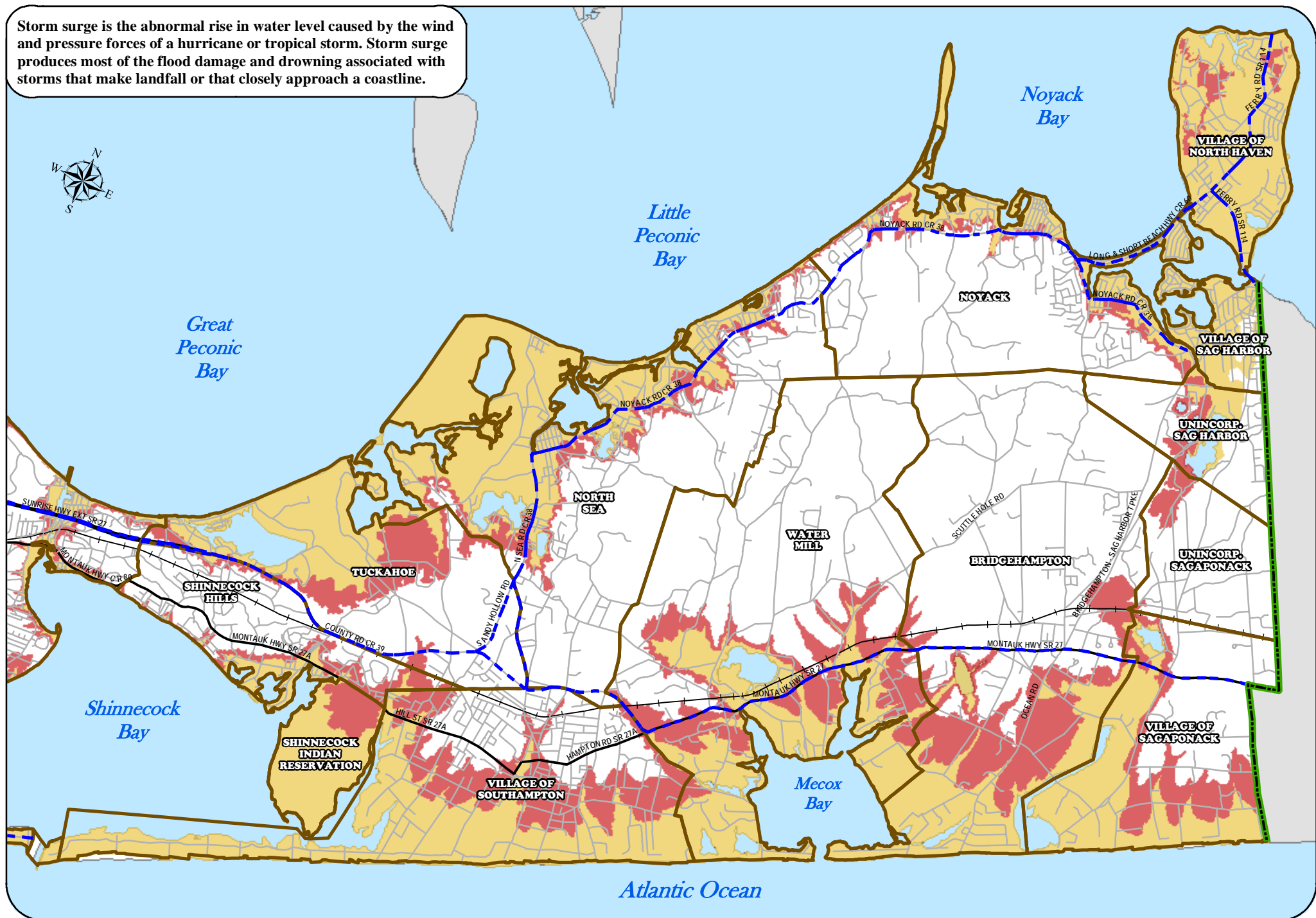


Storm surge is the abnormal rise in water level caused by the wind and pressure forces of a hurricane or tropical storm. Storm surge produces most of the flood damage and drowning associated with storms that make landfall or that closely approach a coastline.



Hurricane Evacuation Zones

- Category 1 & 2 Hurricane
- Category 3 & 4 Hurricane
- Critical Corridors



Town of Southampton - East Portion

EVACUATION MAP

